

Haulmark®

GRIZZLY HD V-NOSE

The completely redesigned and re-engineered GRIZZLY HD is Haulmark's most rugged trailer ever. The toughest trailer for the toughest jobs.

The Haulmark GRIZZLY HD . . . yeah, it's a real beast!



Trailers shown may feature optional equipment available at an additional charge.

SPECIFICATIONS	7' WIDE MODELS					8.5' WIDE MODELS								
	GRVHD712T2	GRVHD714T2	GRVHD716T2	GRVHD716T3	GRVHD720T3	GRVHD8516T2	GRVHD8516T3	GRVHD8520T2	GRVHD8520T3	GRVHD8524T3	GRVHD8528T3	GRVHD8528T4	GRVHD8532T4	
Body: Length (including "V") Width	15'0" 7'0"	17'0" 7'0"	19'0" 7'0"	19'0" 7'0"	23'0" 7'0"	19'0" 8'4"	19'0" 8'4"	23'0" 8'4"	23'0" 8'4"	27'0" 8'4"	31'0" 8'4"	31'0" 8'4"	35'0" 8'4"	
Overall: Length Width Height	17'4" 8'6" 8'4"	19'4" 8'6" 8'4"	21'4" 8'6" 8'4"	21'4" 8'6" 8'6"	25'4" 8'6" 8'6"	21'4" 8'6" 8'7"	21'4" 8'6" 8'7"	25'4" 8'6" 8'7"	25'4" 8'6" 8'7"	29'4" 8'6" 8'7"	33'4" 8'6" 8'8"	33'4" 8'6" 8'9"	37'4" 8'6" 8'9"	
Interior: Length (including "V") Width Height	14'7" 6'9" 6'6"	16'7" 6'9" 6'6"	18'7" 6'9" 6'6"	18'7" 6'9" 6'6"	22'7" 6'9" 6'6"	18'7" 8'1" 6'6"	18'7" 8'1" 6'6"	22'7" 8'1" 6'6"	22'7" 8'1" 6'6"	26'7" 8'1" 6'6"	30'7" 8'1" 6'6"	30'7" 8'1" 6'6"	34'7" 8'1" 6'6"	
Width Between Wheel Wells	N/A	N/A	N/A	N/A	N/A	83"	83"	83"	83"	83"	83"	83"	83"	
Platform Height	19"	19"	19"	21"	21"	21"	21"	21"	21"	21"	22"	23"	23"	
Axles: Suspension Quantity Start Angle	Torflex Rubber Torsion Tandem 10-Degree Up	Torflex Rubber Torsion Tandem 10-Degree Up	Torflex Rubber Torsion Tandem 10-Degree Up	Torflex Rubber Torsion Tandem 10-Degree Up	Torflex Rubber Torsion Tandem 10-Degree Up	Torflex Rubber Torsion Tandem 10-Degree Up	Torflex Rubber Torsion Tandem 10° Up	Torflex Rubber Torsion Tandem 10-Degree Up	Torflex Rubber Torsion Tandem 10-Degree Up	Torflex Rubber Torsion Tandem 10-Degree Up	Torflex Rubber Torsion Tandem 10-Degree Up	Torflex Rubber Torsion Tandem 10-Degree Up	Torflex Rubber Torsion Tandem 10-Degree Up	
Brakes with Breakaway Kit	4-Wheel Electric Drum	4-Wheel Electric Drum	4-Wheel Electric Drum	4-Wheel Electric Drum	4-Wheel Electric Drum	4-Wheel Electric Drum	4-Wheel Electric Drum	4-Wheel Electric Drum	4-Wheel Electric Drum	4-Wheel Electric Drum	4-Wheel Electric Drum	4-Wheel Electric Drum	4-Wheel Electric Drum	
Radial Tire Size Tire Load Range	ST205/75R15 C	ST205/75R15 C	ST205/75R15 C	ST225/75R15 D	ST225/75R15 D	ST205/75R15 C	ST225/75R15 D	ST205/75R15 C	ST225/75R15 D	ST225/75R15 D	ST225/75R15 D	ST225/75R15 D	ST235/80R16 E	
Hitch Ball Size	2-5/16"	2-5/16"	2-5/16"	2-5/16"	2-5/16"	2-5/16"	2-5/16"	2-5/16"	2-5/16"	2-5/16"	2-5/16"	2-5/16"	2-5/16"	
Hitch Height to Top of Ball (Adj. Height Coupler)	17" to 21"	17" to 21"	17" to 21"	19" to 23"	19" to 23"	19" to 23"	19" to 23"	19" to 23"	19" to 23"	19" to 23"	20" to 24"	21" to 25"	21" to 25"	
Hitch Weight (% of Curb Weight)	10% to 15%	10% to 15%	10% to 15%	10% to 15%	10% to 15%	10% to 15%	10% to 15%	10% to 15%	10% to 15%	10% to 15%	10% to 15%	10% to 15%	10% to 15%	
Curb Weight*	2,145 lb.	2,265 lb.	2,385 lb.	2,785 lb.	3,025 lb.	2,895 lb.	3,220 lb.	3,340 lb.	3,665 lb.	4,105 lb.	4,545 lb.	5,170 lb.	5,615 lb.	
GVWR	7,000 lb.	7,000 lb.	7,000 lb.	9,990 lb.	9,990 lb.	7,000 lb.	9,990 lb.	7,000 lb.	9,990 lb.	9,990 lb.	9,990 lb.	12,000 lb.	12,000 lb.	
Payload Capacity*	4,855 lb.	4,735 lb.	4,615 lb.	7,205 lb.	6,965 lb.	4,105 lb.	6,770 lb.	3,660 lb.	6,325 lb.	5,885 lb.	5,445 lb.	6,830 lb.	6,385 lb.	
Rear Door Opening - Width x Height	76"W X 72"H	76"W X 72"H	76"W X 72"H	76"W X 72"H	76"W X 72"H	92"W X 72"H	92"W X 72"H	92"W X 72"H	92"W X 72"H	92"W X 72"H	92"W X 72"H	92"W X 72"H	92"W X 72"H	
12V Male Connection	7-way	7-way	7-way	7-way	7-way	7-way	7-way	7-way	7-way	7-way	7-way	7-way	7-way	
Main Rail Tube	2" x 4"	2" x 4"	2" x 4"	2" x 6"	2" x 6"	2" x 6"	2" x 6"	2" x 6"	2" x 6"	2" x 6"	2" x 8"	2" x 8"	2" x 8"	

*Curb weights are approximate and based on a standard trailer with no options. Adding optional equipment will increase curb weight and reduce payload capacity.

STANDARD FEATURES

- ◆ Haulmark DuraCage™ Construction
 - Tube Main Rails
 - 16" OC C-Channel Crossmembers (Full Height of Main Rail)
 - 16" OC Tube Vertical Posts
 - 16" OC Tube Roof Bows
 - Dust-Proof Sidewalls
- ◆ Entire Chassis Undercoated
- ◆ ArmorTech™ on A-Frame and Interior Wheel Boxes
- ◆ Adjustable Height 2⁵/₁₆" Wallace Forge® Cast Coupler (Made in the USA)
- ◆ Square Tube 8K Dropleg Sidewide Jack with Footplate (Bolt-On/Replaceable)
- ◆ Dexter® Torsion Axles with E-Z Lube® Hubs
- ◆ Radial Tires with Silver Mod Wheels
- ◆ 4-Wheel Electric Brakes with Breakaway Battery
- ◆ 3' V-Nose and Flat Roof with Cast Aluminum Rear Corners
- ◆ 1-Piece Seamless Aluminum Roof
- ◆ Smooth Aluminum Fenderettes
- ◆ 24" ATP Stoneguard
- ◆ .030 Aluminum Exterior — Bonded (9 standard colors)
- ◆ 3.75" Extruded Aluminum Top & Bottom Trim
- ◆ Double Rear Doors (Rear Ramp Door Optional Upgrade)
- ◆ 36"W Side Entry Door with Flush Lock & Dead Bolt (1¹/₂" Core)
- ◆ LED Slimline Clear Lens Tail Lights
- ◆ LED PC/PC2 Rated Clear Lens Clearance/Marker Lights
- ◆ 12V High Output LED Dome Lights (800 lumens)
- ◆ Rear ID Bar with Built-In Loading Light
- ◆ 12V Wall Switch (2)
- ◆ 3/4" PlexCore™ Decking
- ◆ 3/8" PlexCore™ Sidewall Liner
- ◆ 3-Year Limited Warranty



Trailers shown may feature optional equipment available at an additional charge.

TUFF 10 REASONS

THE NEW HAULMARK GRIZZLY HD IS A REAL BEAST

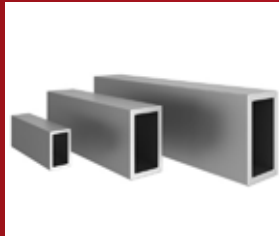


©Haulmark® 2019 LITHO USA Form HM_GrizzlyHDVF_0719

1

TUBE FRAMES: MAIN RAILS, SIDEWALLS & ROOF

All Grizzly HD models feature tubular steel where it counts. Tube main rails are stronger than I-beam and tube sidewalls & roof structure are more rigid than hat posts. This combination delivers true commercial grade toughness. Expect 15+ years of daily service.



6

ARMORTECH™ COATED A-FRAME & REAR HOOP

The trailer's A-frame takes the brunt of abuse from road hazards – gravel, stones, road salt, etc. That's why we spray the A-frame and interior wheel boxes with ArmorTech™. ArmorTech's Polyurea coating guards against chipping, is highly corrosion resistant, and protects against harmful de-icing agents.



2

FULLY-BOXED CHASSIS CONSTRUCTION

What does "fully-boxed" mean? The main rails, cross members, outriggers, and end rails are full height. Having all the chassis components the same height allows the strongest part of the tube, the top & bottom, to match up with the surrounding components. Greater stiffness = less frame twist.



7

ADJ. CAST COUPLER & SIDE WIND DROP-LEG JACK

You can tell the Grizzly HD means business just by looking at the coupler and jack. The coupler is cast steel (not stamped) made in the U.S.A. by Wallace Forge®. The high-capacity 8K drop leg sidewind jack extends up to 15". No need to lug around wood blocks anymore.



3

SOLID STEEL REAR CORNER POSTS

Solid steel rear corner posts extend to the bottom of the frame providing the maximum welding surface possible. End rails and corner posts are welded together both horizontally and vertically for long-lasting durability.



8

WELDED STEEL HINGES WITH GREASE ZERKS

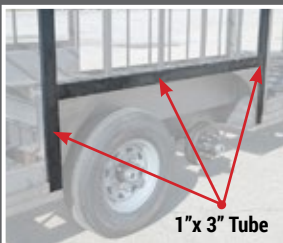
Rear ramp doors feature welded on steel offset hinges with grease zerks for easy maintenance and smooth operation. (8.5'W = 5 hinges, 7'W = 4 hinges). Double rear door models feature bolt-on aluminum hinges for carefree maintenance.



4

WHEEL BOX STRUCTURE

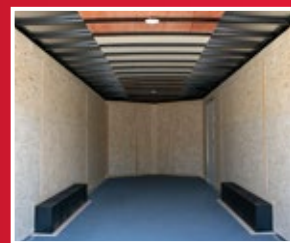
All Grizzly HD models feature a reinforced wheel box structure. A 1" x 3" tube runs horizontally across the top of the wheel box and ties into two 1" x 3" vertical tubes at each end of the wheel box. Vertical tubes extend the full sidewall height – bottom rail to top rail.



9

RUGGED, LOW-MAINTENANCE INTERIOR

The interior features 3/4" PlexCore™ flooring and 3/8" PlexCore™ sidewalls. PlexCore™ is a high-performance engineered panel with greatly enhanced physical and structural properties including reduced moisture absorption, enhanced screw-holding, and long-term stability. 2-Year Warranty.



5

DUST-PROOF, RECESSED SIDEWALLS

The sidewall structure of the Grizzly HD features an exclusive, proprietary modular design. The tubular sidewall rests on a recessed sidewall "shelf" that is incredibly strong and fully sealed from the elements. No dust – no way!



10

THE LITTLE THINGS MATTER

Attention to detail is important and often overlooked. Check out the cast aluminum rear corners, thick 3.75" top trim, extruded aluminum drip rail, deluxe ramp door trim and all LED exterior lighting. The little things can make a big difference.

